



MARKSETBOT

Assembly Guide

MSB v5

MarkSetBot.com/Help

Table of Contents

UNBOXING PAGE 4

PREP AIR PUMP PAGE 7

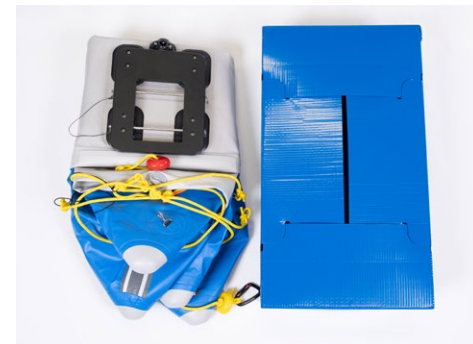
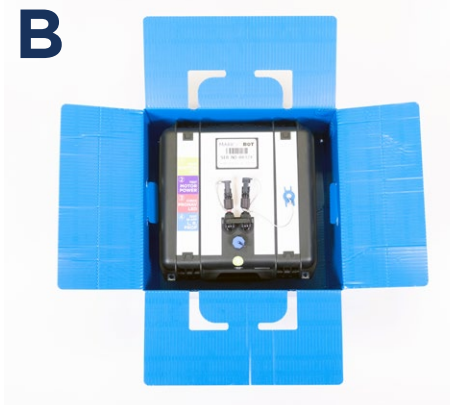
SET UP HULL PAGE 8

SET UP MOTOR PAGE 12

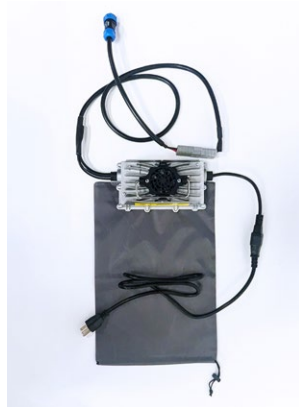
SET UP CASE PAGE 16

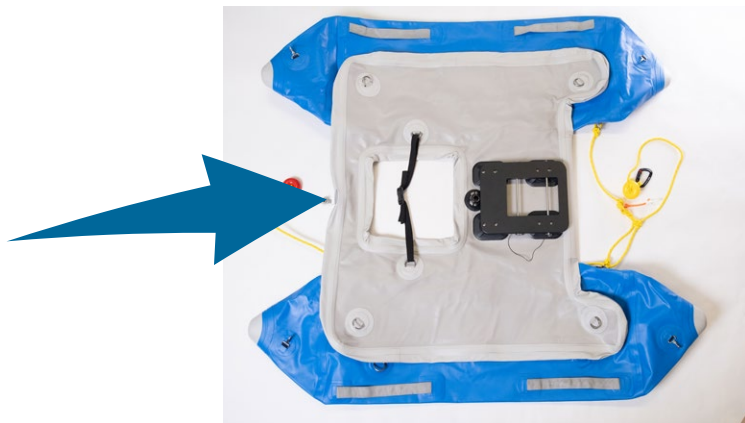
SET UP TOPSIDE PAGE 18

POWER ON/TEST PAGE 23



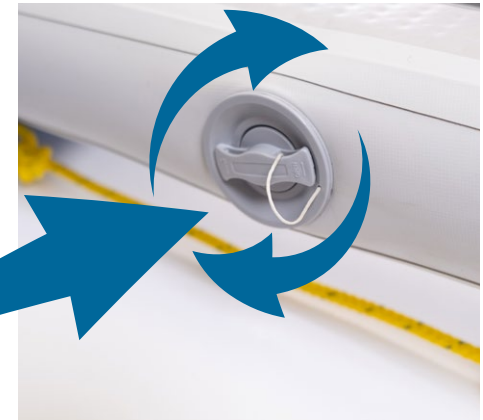
D





INPUT	READ
13.1 v	5.00
	PSI

EN - AUTO-OFF
 ES - AUTO-APAGA
 FR - ARRÊT AUTOMATIQUE
 IT - ARRESTO AUTOMATICO
 DE - AUTOMATISCHE ABSCHALTUNG
 NL - AUTOMATISCH UITSCHAKELEN
 JP - 自動ストップ

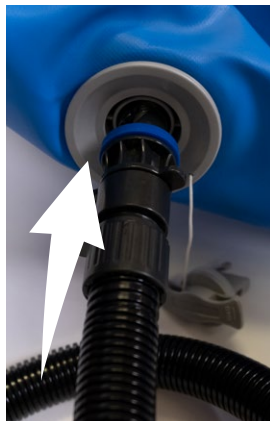
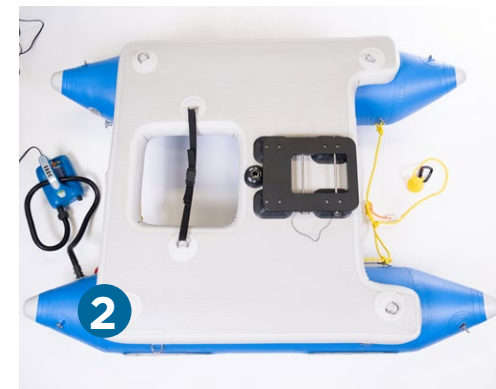
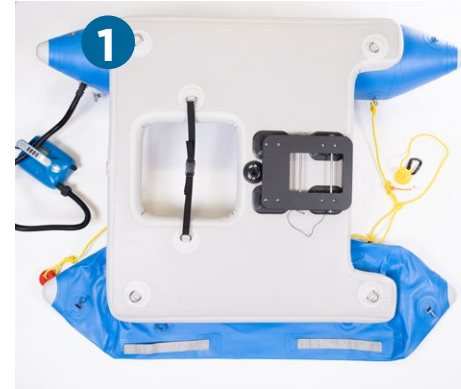
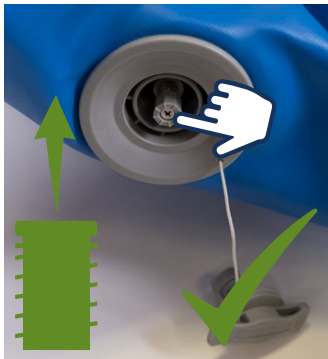


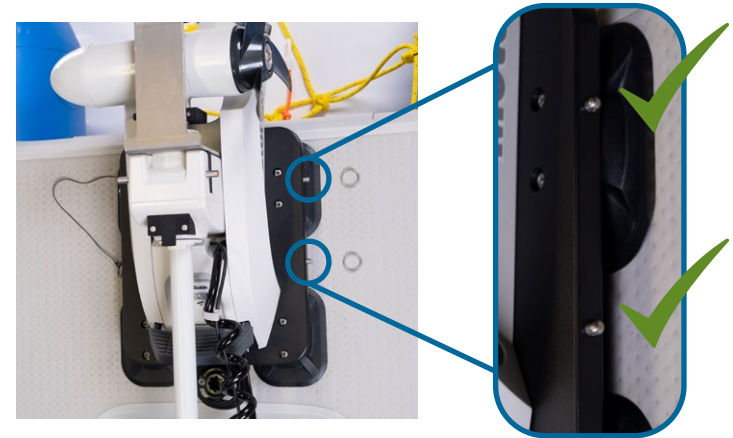
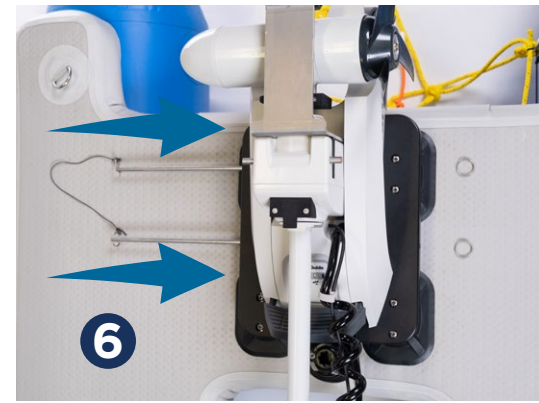
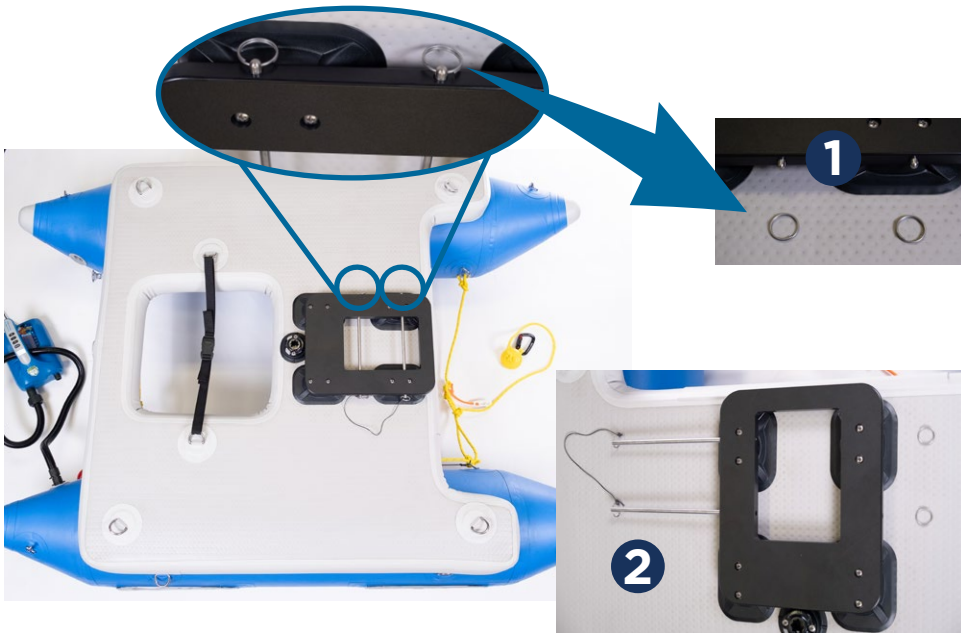


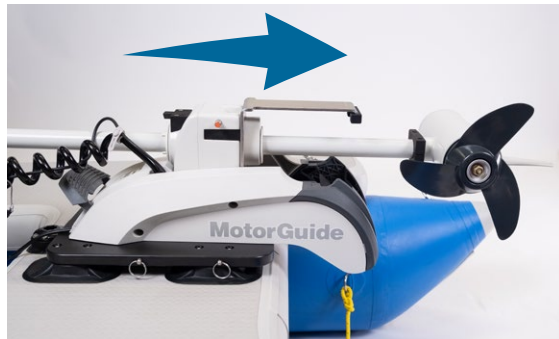
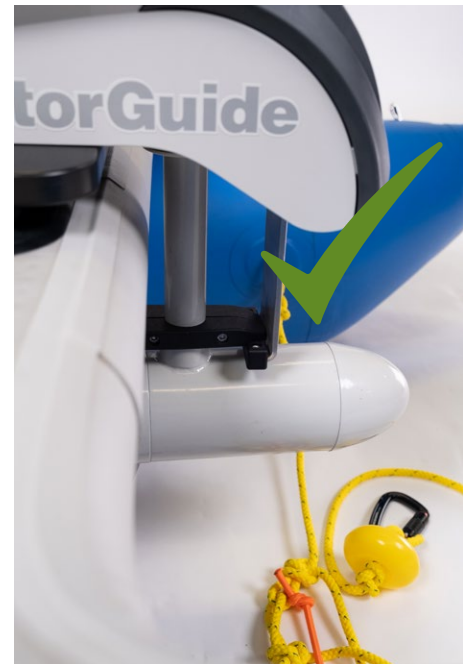
INPUT 13.1 v READ 2.50 PSI

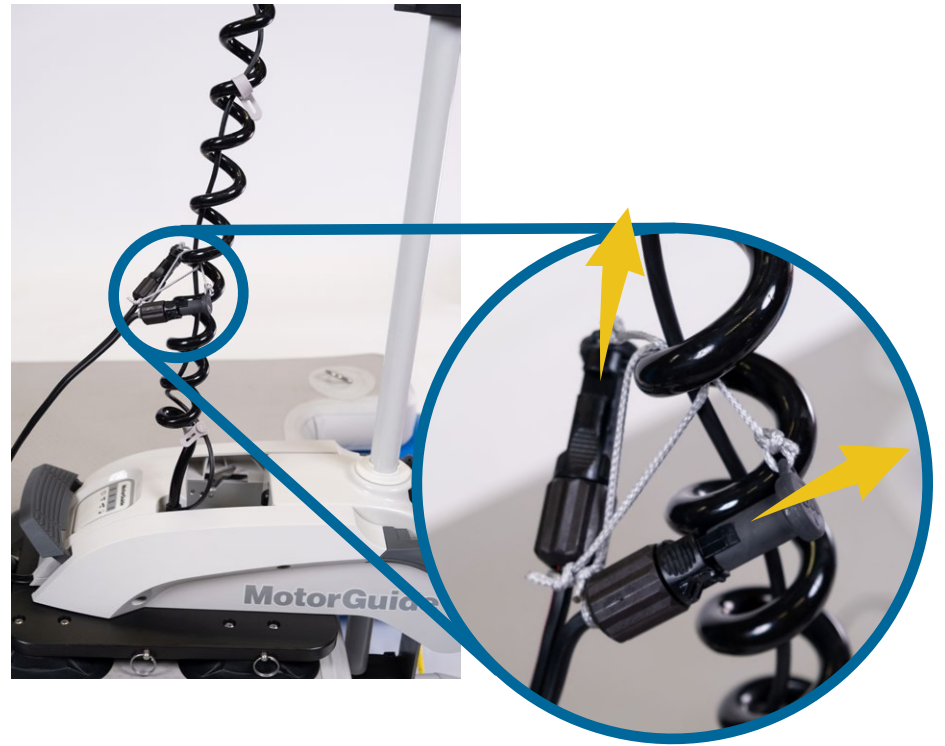
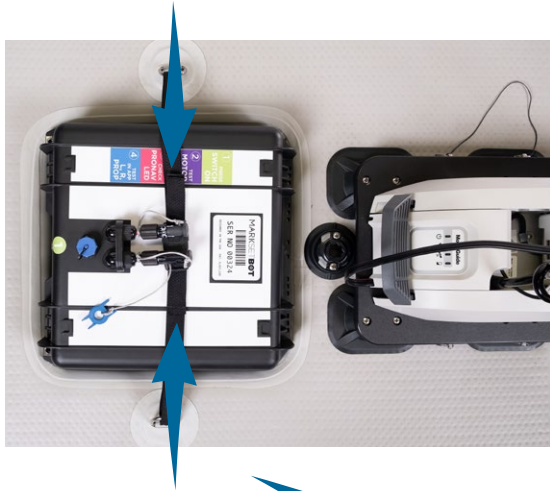
1

EN - AUTO-OFF
 ES - AUTO-APAGA
 FR - ARRÊT AUTOMATIQUE
 IT - ARRESTO AUTOMATICO
 DE - AUTOMATISCHE ABSCHALTUNG
 NL - AUTOMATISCH UITSCHAKELEN
 JP - 自動ストップ



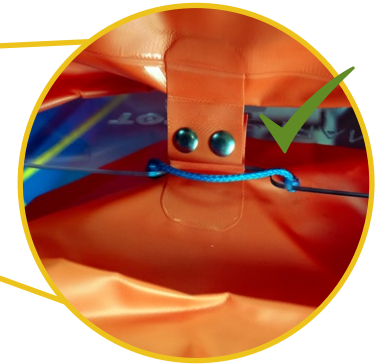
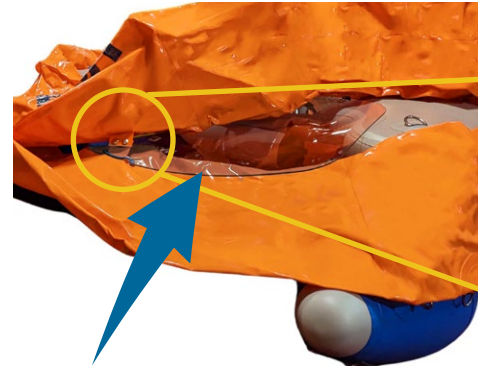
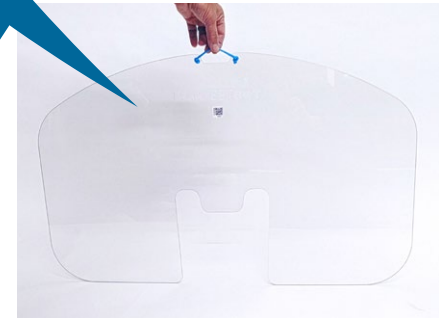








THIRD RING
FOURTH (BOTTOM) RING





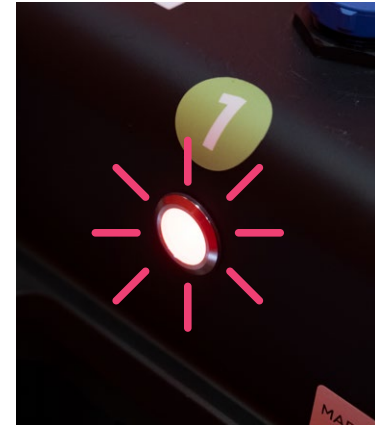
INPUT	READ
13.1 v	1.50
	PSI

EN - AUTO-OFF
 ES - AUTO-APAGA
 FR - ARRÊT AUTOMATIQUE
 IT - ARRESTO AUTOMATICO
 DE - AUTOMATISCHE ABSCHALTUNG
 NL - AUTOMATISCH UITSCHAKELEN
 JP - 自動ストップ





- 1 PRESS SWITCH ON
- 2 TEST MOTOR POWER
- 3 CHECK PRONAV LED
- 4 TEST IN APP L, R, PROP



MARK SET BOT[®]

For additional training resources, visit:
MarkSetBot.com/Help